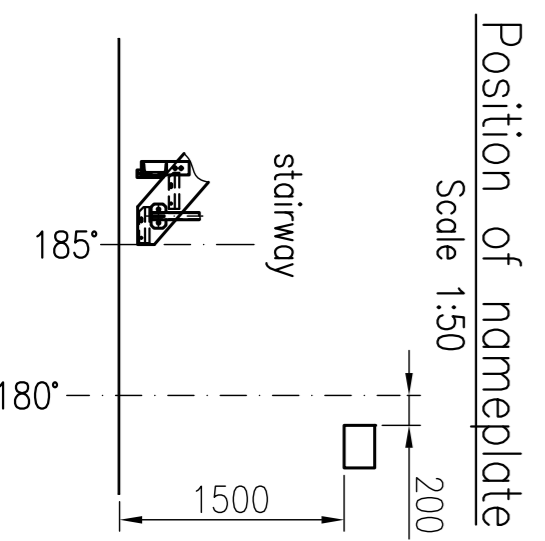
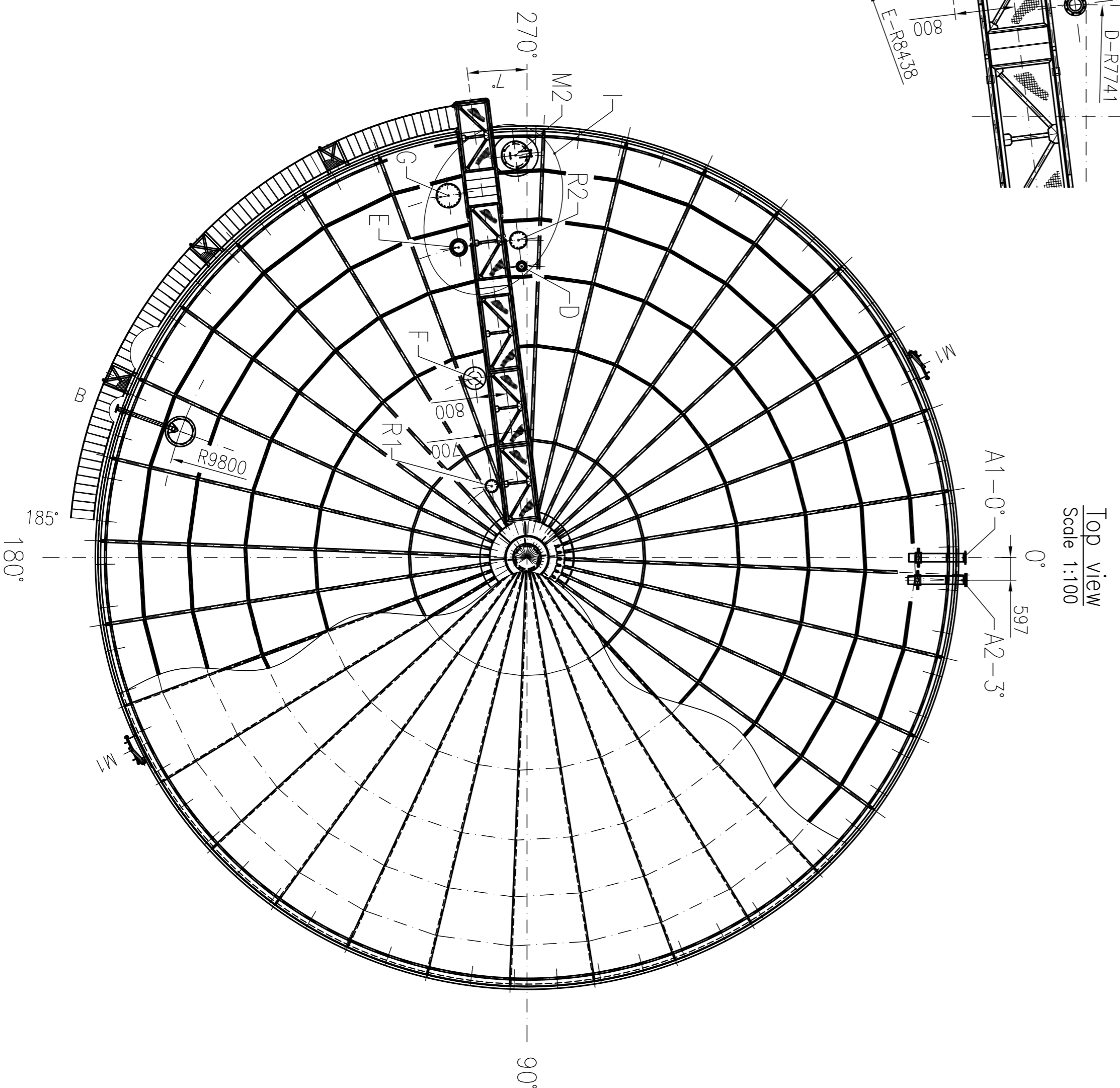
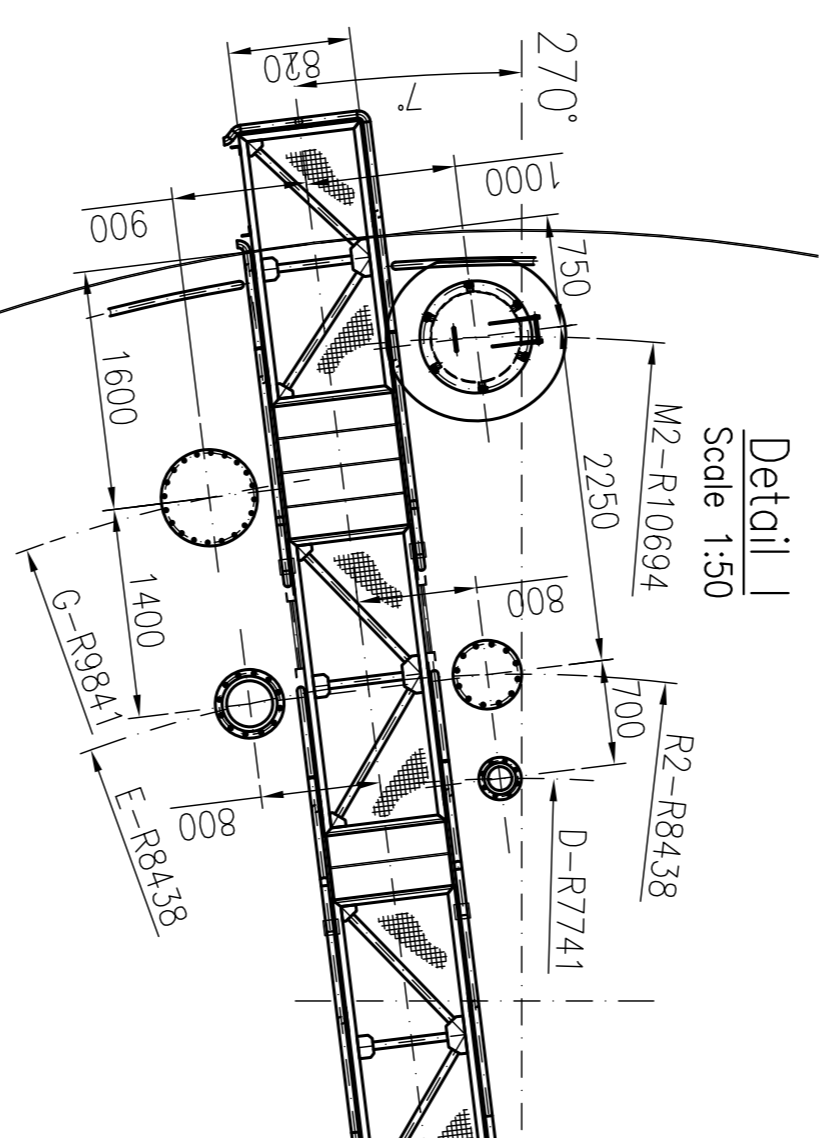


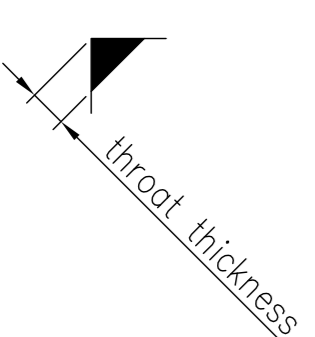
Data about tank	
Standard for design:	EDIC EN 14015:2005
Nominal capacity:	4700 [m ³]
Working capacity:	4530 [m ³]
Type of product:	EEH3H
Diameter of the shell:	22 800 [mm]
Height of shell:	11 950 [mm]
Max. level of liquid:	11 500 [mm]
Max. level of water during hydrotest:	11 900 [mm]
Specific weight of product:	0.82 [t/m ³]
Wind load:	0.5 [kN/m ²]
Snow load:	1.5 [kN/m ²]
Internal pressure:	10 [mbar]
Negative pressure:	5 [mbar]
Specific weight of water:	1.00 [t/m ³]
Working temperature:	-
Design temperature MIN / MAX:	-20 / +70 [°C]



LIST OF MANHOLES AND NOZZLES

Nr	Pos.	Description	Type of flange	Height from bottom	Orientat.	Position
M1	2	Shell manhole	DN 600			shell
M2	1	Roof manhole	DN 600			roof
M3	1	Roof manhole	DN 600 PNG EN 1092-1 in middle mmocsk + "rnyx"			roof
A1	1	Inlet / Outlet nozzle	DN 200 PN16 EN 1092-1 butt welded			shell
A2	1	Inlet / Outlet spare nozzle	DN 200 PN16 EN 1092-1 butt welded			shell
B	1	Drawoff sump nozzle	DN 80 PN16 EN 1092-1 butt welded			shell
D	1	Flame arrester nozzle	DN 150 PN16 EN 1092-1 butt welded			roof
E	1	Flame arrester nozzle	DN 300 PN16 EN 1092-1 butt welded			roof
F	1	Roof vent	DN 350 PNG EN 1092-1 butt welded			roof
G	1	Level measurement nozzle	DN 500 PNG EN 1092-1 mmocsk + "rnyx"			roof
R1	1	Spare nozzle	DN 200 PN16 EN 1092-1 butt welded			roof
R2	1	Spare nozzle	DN 300 PN16 EN 1092-1 butt welded			roof

- Remarks:
- All dimensions without specially noted are in [mm].
 - Used steels - according to EDIC EN 10025.
 - Prefabrication and erection of steel structure - according to EDIC EN 14015:2005.
 - Welds - according to EDIC EN 22553.
 - Control of welds - according to EDIC EN 14015:2005.
 - All butt welds should be done with full penetration and fusion. They are on 100 % controlled.



University of Architecture, Civil Engineering and Geodesy Department "Steel, timber and plastic structures"		Sheet	A2
Project	Aboveground Steel Tank	Scale	1:100
Title	GENERAL PLAN	Data	
Student		Drawing	
Lecturer			